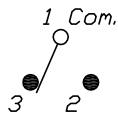


RECOMMENDED P.C.B. LAYOUT
NOT TO SCALE



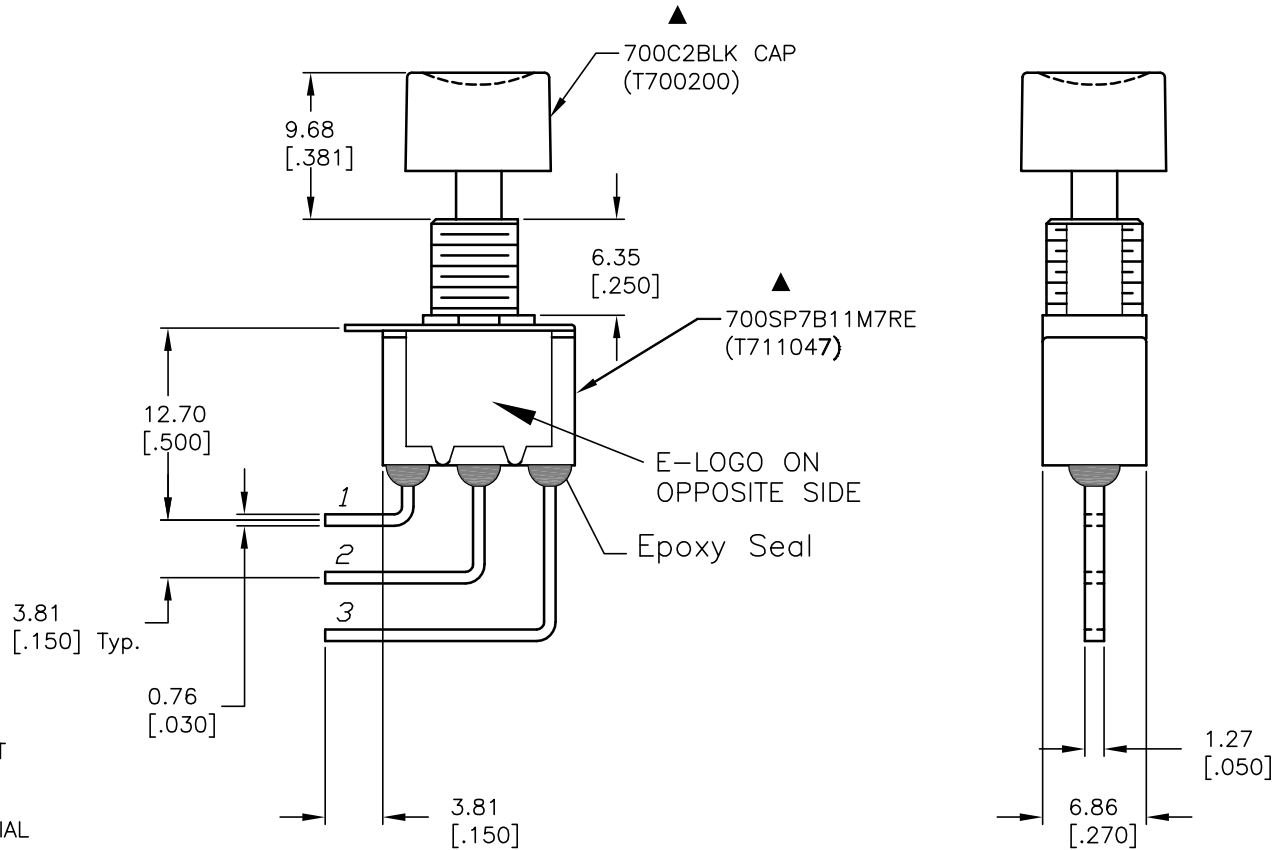
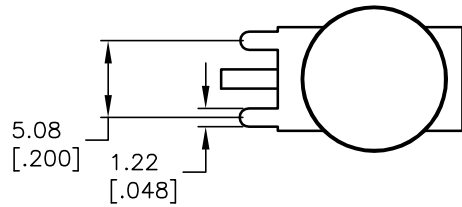
CIRCUIT: SPDT

SWITCH FUNCTION	
DN	<DN>
1-3	1-2

< > =MOMENTARY

NOTES:

- ALL DIMENSIONS IN MM [INCH]
- GENERAL TOLERANCE: X.X=±0.4
X.XX=±0.25
- TERM. NOS. FOR REF. ONLY
- RATING: 0.4VA @20V AC OR DC
- ▲ MATERIAL: FIXED TERMINAL & MOVING CONTACT COPPER ALLOY W/GOLD PLATING OVER NICKEL PLATE
- CONTACT RESISTANCE: 10MILLI OHMS MAX INITIAL @2-4VDC, 100mA for AG & AU
- ELECTRICAL LIFE: 50,000 MAKE-AND-BREAK CYCLES AT FULL LOAD.
- INSULATION RESISTANCE: 1,000M OHM MIN.
- DIELECTRIC STRENGTH: 1000V RMS @SEA LEVEL
- OPERATING TEMP.: -30°C to 85°C
- ▲ DENOTES CRITICAL PARAMETER.



E-SWITCH®

TITLE				
700SP7B11M7REC2BLK				
SCALE	DATE	DR	DWG	REV
2:1	10/1/03	AR	XT0120P	A

THE INFORMATION CONTAINED IN THIS DOCUMENT IS PROPRIETARY TO E-SWITCH AND IS NOT TO BE COPIED OR TRANSFERRED

A	13500	RELEASED FOR PRODUCTION	10/1/03	AR
REV.	ECN No.	DESCRIPTION	DATE	CHKD